

# PLANTATION ESTATES NEWSLETTER



September 2010 • Volume No. 57

Plantation Estates Community Association • P. O. Box 683 • Marrero, LA 70073

Web Site: [www.plantationestates.org](http://www.plantationestates.org)

## President's Report

Dear Friends and Neighbors,

I would like to thank everyone who sponsored, volunteered or attended the 27<sup>th</sup> Annual Night Out Against Crime event this year that was held on Tuesday, August 3, 2010. We had a great attendance and lots of support from local businesses in the community. Also,

thanks to all who donated to Crimestoppers, an organization which has solved over 10,000 felony crimes and paid \$1.4 million in cash rewards.



Thanks to Mike and Lori Breaux; they sold raffle tickets for a Saints theme charm bracelet, and we raised about \$600 for Crimestoppers.



Everyone seemed to enjoy lots of great food, mingled with neighbors, visited with elected officials and special guests, met police officers,

fire department personnel and the West Jefferson Medical Center family. Over 55 door prizes were raffled to members that included many gift certificates, paintings, LSU tickets and much more. We also made 150 goodie bags that included food certificates, coupons for local businesses and other items.

Council-at-Large John Young gave out Certificate of Merit awards for outstanding service to the Jefferson Parish Police Department, Marrero/Estelle Fire Department and West Jefferson Medical Center. There were many attractions such as the Jefferson Parish Police Department fire truck, a spacewalk, New Orleans Hornet Horneybees cheerleaders and music by Tom Verret with the Louisiana Kids. The WJMC family set up a tent to provide information on services they offer our community, along with the WJMC ambulance.

Thanks to all of the individuals and businesses that contributed door prizes, food or sponsored the event. We greatly appreciate the Mediamolles and Kenyons for the use of their electricity again this year. Thanks to "Big John" Combel and George Simpson who helped cut the grass and to Big John for donating the fans, signs, drinks and more. Special thanks to the entire Plantation Estates Board for hosting and volunteering to work the event, as well as many other homeowners who volunteered their time.

If you wish to be added on our email list, please email [president@plantationestates.org](mailto:president@plantationestates.org). We send out many neighborhood and community news items, as well as try our best to keep you informed while away during an evacuation.

Your neighbor,

Charles Miller, III  
Plantation Estates Community Association, President

---

# Neighborhood News



## Colonel William P. Jensen

Congratulations to the son of Bob and Candy Jensen. Their son Colonel William P. Jensen was recently promoted to vice commander, 55<sup>th</sup> Wing, Offutt Air Force Base, Neb. He is responsible for organizing, training, and equipping six groups and 30 squadrons executing worldwide intelligence, surveillance and reconnaissance; electronic attack; command and control; presidential support; and treaty verification missions. He is also responsible for base support to more than 50 associate units, including U.S. Strategic Command, Air Force Weather Agency, and more than 57,000 active-duty members, civilians, family members and retirees. Col. Jensen is a Master Navigator with more than 3,500 flying hours in the RC/TC-135S/U/V/W, KC-135A/R, and T-43.

## Matthew Tusa

Congratulations to the son of Nick and Sally Tusa. Matthew's Eagle Scout project addressed a need of many in Louisiana. Food Drives were held in Plantation Estates neighborhood and at Laborie's Supermarket. Donations were collected for Second Harvest Food Bank. They provide food to families in twenty-three parishes of Louisiana. He collected a total of 2,300 pounds of food. The food collected amounted to 1,782 meals. His Eagle Scout project was successful due to the generosity of our community. Thank you all who donated food and helping fill a void in the food bank.

---

## **MEMBERSHIP UPDATE,** **FALL 2010**

By Wynona Witkovski

### **Membership Update**

I am pleased to announce that Plantation Estates Community Association membership continues to grow, with membership currently at 289, representing an increase of about 20 households since May. I would like to thank new and renewing members for your support.

### **Your Community, Your Association, Your Board**

Membership ensures that you are part of an organization that supports quality of life issues in our community. The association board leads this mission, but the association board can't be as effective as it needs to be without the active participation of the general membership. The board needs your energy and ideas, in addition to the financial support you provide in form of membership dues. Please remember that the board is not an entity unto itself; the board acts on behalf of the association membership. District representatives act not as individuals, but as spokespersons for their district. The board is tireless in its efforts to communicate with the association members concerning issues that affect the community, but when issues arise that require board action, the only way the board will know your opinions or desires, is if its membership is actively involved in our community and communicates with the board.

This is the primary reason contact information is provided for all officers in every newsletter. It is ***your*** community, ***your*** association, ***your*** board. Join the association if you haven't already, and let the board know how it can better represent you.

### **Membership Dues Renewal**

All membership dues are due January 1st and expired December 31 of the same year.

PECA membership dues are \$60 per year, and a new membership enrollment form is included in this newsletter. If you are a new member or you are renewing your membership, please remit your dues today to: (New residents joining for the first time, pay only \$30 for the remainder of 2010.)

**Plantation Estates Community Association**  
**P.O. Box 683**  
**Marrero, LA 70072**

If you cannot remember if you have renewed for this year, please contact me and I will be glad to check our records.

If you have any questions concerning your membership or would like general membership information, please contact Charlie Miller, your district representative or me. [Contact information is listed in this newsletter and on the PECA website: [www.plantationestates.org](http://www.plantationestates.org)]

Revised 8/12/2010



# Security

By: Colonel John Fortunato, Jefferson Parish Sheriff's Office

---

Hello again,

As your vice president of security in Plantation Estates, as well as the Commander of the JPSO Public Information Office, I am pleased to report that residents in more than 75 Jefferson Parish neighborhoods recently lit up the night with National Night Out Against Crime parties. This is the largest number of National Night Out Against Crime parties we have had in Jefferson Parish for quite some time. Having personally attended a countless number of Night Out parties over the years has provided me an opportunity to meet some truly wonderful people. This especially holds true for the many Night Out parties held here in our own neighborhood. Keeping in mind that each year the attendance is always larger and the activities during our event continue getting bigger, I did do something unusual this year at our own Night Out party. And that was, deciding to stay in PE for the entire evening discussing topics of all kinds and having conversations with many of my neighbors with whom I normally don't get a change to sit and talk with. It truly was a blessing and I am so glad I stayed.

National Night Out Against Crime was designed to offer citizens throughout our Nation an opportunity to sit and share ideas and stories of how to make their neighborhoods safe. Neighborhoods have grown closer as people come to know each other better; they form partnerships to watch out for each other's property, children and vehicles. As neighbors unify, they also develop relationships with the officers of the JPSO who patrol their area. When strangers appear in the neighborhood, the residents are not hesitating to pick up the phone and call the JPSO. That's why we call it Neighborhood Watch. One of the reasons that Jefferson Parish is one of the safest communities of its size in the nation is the special relationship that has long existed between the residents and the JPSO. This year's National Night Out Against Crime certainly demonstrated that the relationship is as strong as it ever was. I would like to personally thank all of our Night Out committee members who made this event the huge success that it was.

Now, on another topic, it's that time of the year to remind all of our residents that "school is in". With that being said, please drive safely; and "watch out for our children". The posted speed throughout our neighborhood is 20 MPH, and STOP means just that....STOP. Occasionally, we will receive complaints of speeding on certain streets. When we get these official complaints they are forwarded to our Traffic Enforcement Unit, who in turn will show up in PE to shoot radar. The end result could be a citation, so please observe the 20 MPH speed limit. Parents should continue to monitor their children's activities along with instructing them that they too can call 911 if they seem to believe something is not right when returning back home from school. Remind them to call 911 first and then a parent, relative or neighborhood. Our PECA Security Patrol Officers are out on patrol watching out for all of us. I encourage you to pull up next to one of them, or call 911 and have them dispatched to your location to share your compliments and or concerns to them.

In closing, you may occasionally hear about vehicle burglaries and auto thefts occurring once in a while in PE or in some of the surrounding neighborhoods within the Parish. After reviewing some of our recent crime stats on these two offenses investigators have determined that the majority-some 90+ % of reported vehicle burglaries occurred without the suspects ever physically breaking into the vehicle. What that means is, almost all of the vehicles targeted *were left unlocked*. Last month 40% of the vehicles stolen throughout the Parish were taken when the keys *were left in the vehicle*. Please remind yourself, your family members and neighbors to always lock their vehicles and to remove the keys and all valuables, such as purses, laptops, GPS devices and weapons from within the vehicle. Also, don't forget to keep your doors locked on your homes and if you have an alarm system, keep it activated.

If you have a question or comment you would like to share with me, please give me a call on my cell at 504-616-8731 or you can email me at [fortunato\\_jn@jpsoc.com](mailto:fortunato_jn@jpsoc.com).

Sincerely,

Colonel John N. Fortunato

ABOVE ALL, IF YOU ARE VICTIMIZED, REPORT IT TO POLICE IMMEDIATELY.

---

## **JPSO Offering Citizens Academy Again**

We are please to announce the start of our next JPSO Citizens Academy on October 5, 2010. This program is open to all residents of Jefferson Parish who have an interest in learning about the operation of the Jefferson Parish Sheriffs Office. The program consists of various lectures, site visits, and demonstrations based out of our Training Academy located in Harvey.

Those who are active in neighborhood, business, and community organizations are especially encouraged to attend along with residents who just want to learn about their Sheriff's Office. Topics of interest include Investigations, CSI, K-9, SWAT, Community Relations, and operation of our 911 Center.

The program is free and meets once a week for approximately eight weeks. If you are interested in attending, please submit your application as past classes have always filled early.

Sincerely,

Deputy Chief Steven E. LaChute  
Commander, Technical Services Bureau  
363-5547  
363-5705

---

## **PE Homeowners: Reminder to Secure Your Wireless Internet**

By: Charles Miller III

I've periodically noticed many WiFi setups are left unsecure, which an invitation for illegal activity on your network. A wireless network can usually extend beyond a residential home or small business and into a street or neighboring property. Because of this, neighbors or someone out on the street can easily detect and access WiFi networks. With access to an unencrypted network, someone could easily utilize it for malicious or illegal activity.

If you share folders across your network, someone accessing that network can have access to all of your documents. This means pictures, work documents, personal information, financial documents, Web browser cookies and anything else you may have on your computer. And they can't just view the information; they can save it on their own computer. Even without actively sharing folders on your network, there are ways into your private information.

Beyond privacy issues, someone with anonymous access to a wireless network can use it for much more menacing, and even illegal, activities. They could use your unprotected wireless network to surf the Web and go anywhere they wish on the Internet, without the fear of someone finding out who they are. This could mean posting incendiary remarks in Web forums or even writing threatening remarks about government officials or public figures. They could also send 1,000's of spam messages from your network, share copyrighted music or movies, send out computer viruses, or even worse, upload illegal content to the Web – all from your public IP address. If this happens, the culprit is usually anonymous and all activity can be traced back to you.

---

---

## West Jefferson Medical Center Opens “Pantry” in its gift shop

The Pantry is the latest gift shop to open at the hospital. West Jeff Chief Administrative Officer Angela Greener, who designed the shop, said all proceeds go back into hospital operations. “It’s a little higher-end” merchandise, she said. Greener said the hospital recognized that sometimes, visitors to the hospital might want to buy a treat that was “not just out of a vending machine.” It’s also a nice place to buy gifts, she said. As much as possible, the shop is offering locally made items, such as Hubig’s pies and specialty cookies from *One Smart Cookie* located at 1331 Baratavia Blvd. in Marrero, a West Bank bakery. The hospital is seeking more volunteers to help in the Pantry and its other gift shops. West Jeff needs cashiers and people to stock merchandise. Hospital CEO Nancy Cassagne said high school students ages 16 and up as well as adults and senior citizens are welcome to apply. Potential volunteers should call 504.349.6262 or 504.349.1306. Hours are flexible. Hospital spokeswoman Jennifer Steel said volunteer support is essential. “Our volunteers continue to amaze us with their support and love,” she said. The Pantry is open Monday through Friday from 8 a.m. to 6 p.m.

---

## Jefferson Parish Council Chairman John Young Appointed to Oil Spill Task Force

Jefferson Parish Council Chairman John Young has been appointed to the National Association of Counties (NACo) Oil Spill Task Force.

NACo National President Glen Whitley of Texas made the selection from parish/county leaders from Texas, Louisiana, Mississippi, Alabama and Florida. Whitley said, “It is our goal to assist you in the Deepwater Horizon oil spill cleanup, recovery and restoration process by facilitating information sharing and problem solving across the states and advocating for your interest in Washington, D.C.”

The Task Force will focus on the following:

- Establishment of a dedicated federal funding program to reimburse counties and parishes for clean up expenses and lost revenue.
- Streamlining of the local government claims submission and reimbursement process.
- Support for lifting the moratorium on deep water drilling to mitigate economic losses in the region.
- Support for additional resources to address the mental health needs of Gulf Coast residents.

Council Chairman Young stated he is proud to have been selected to represent Jefferson Parish on this oil spill task force. “NACo is the only national organization that represents parish/county governments before the Administration and Congress. I look forward to actively participating in all efforts to solve the problems we face from the catastrophic effects of the oil spill.”

---



# **OFF DUTY LAWN SERVICES**

## **504.234.6943**

Lot Cutting

Landscaping

Seasonal Clean-up

*No contract needed*

Contact: Billy Tiftt by phone (above) or email [btiftt6043@yahoo.com](mailto:btiftt6043@yahoo.com)

## **Restrictions Committee**

By Candy Jensen

The Plantation Estates Restrictions Committee wishes to thank homeowners and their children for making an effort not to park extra vehicles on the street this summer. Overnight street parking is still a problem and concern; please do the right thing.

We wish a good school year to all, but please note your driving speeds in the neighborhood, the radio volume in your vehicles and, too, stop sign usage. We have received many calls regarding the STOP sign on the corner of Parlange and Gainswood. Not coming to a complete stop is one thing, but several cars don't even slow down. We certainly do not want an accident or injury situation to be the result of such carelessness.

Letters and home visits from the committee have proved to be successful with correction of infractions...

Thank you to all.

REMINDER... most concerns are:

- Ø Vehicles parked on the street
- Ø Boats and motor homes visible in driveway
- Ø Poor up keep of yard and needed house repairs

The summer has been extreme with high temperatures and lack of rain but basic yard care is definitely an issue with some residents.

### **Additional Volunteers Needed for Garden of the Month**

We are in need of additional volunteers to keep up our Garden of the Month program.

Winners are selected from paid association members once a month. If you are interested, please call Charlie at 439-3164.

Thanks for your consideration to help. We would like to thank Debbie Blanchard for her time and talent over the years handling this responsibility.



PATRICK CAMPBELL, ABR®, MS, E-COM  
REALTOR®

(504) 460-9055 CELL  
(504) 361-8055 BUSINESS  
(504) 361-8099 FAX  
[Patrick.Campbell@CBTEC.com](mailto:Patrick.Campbell@CBTEC.com)



TEC REALTORS®  
3201 General de Gaulle Drive  
Suite 100  
New Orleans, LA 70114



[www.coldwellbanke.com/for/patrickcampbell](http://www.coldwellbanke.com/for/patrickcampbell)

**PRIVATE TUTORING**

**EDIE MEAUX**

**504 - 486 - 4420**

**EdithMeaux@Cox.net**

**LOUISIANA CERTIFIED  
Kindergarten / Elementary  
All Subjects**

## Jefferson Flood Insurance Rating Improves

It's official. Parish Officials have received notification that the unincorporated Jefferson Parish's classification in the Community Rating System (CRS) has been upgraded by the National Flood Insurance Program for the second time in less than a decade. The rating for unincorporated Jefferson Parish will be upgraded from Class 7 to Class 6 status. This will mean insurance premium savings for residents with flood insurance policies, depending on their flood zone. Residents in zones "AE" and "VE", which is in the flood plain, will receive a 20 percent discount on annual premiums as opposed to 15 percent currently. Residents in zone "X", which is outside the floodplain, will receive a 10 percent discount as opposed to the current 5 percent. The discounts will result in an increased overall annual savings to policy holders of more than \$3.4 million. Adding in the annual savings amount for the current Class "7" (\$9.2 million),

overall annual savings of \$12.6 million will be enjoyed by areas homeowners. Homeowners are advised to review renewal documents carefully and discuss the flood zone ratings and discount program with their insurers. Jefferson Parish is the first community in Louisiana to achieve a Class 6 rating, and only two communities, the City of Kenner and East Baton Rouge Parish, have the Class 7 rating. The savings should take effect for all policies renewed after May 1, 2010.



### *Garden of the Month*

By Debbie Blanchard

*June 2010*

M/M Clarence Barrios	78 Burleigh Ct.	District 1
M/M John Gulizo	26 Melrose	District 5
M/M Mysore Nataraj	23 Oakley	District 6
M/M Terry Cox	26 Gainswood Dr. E	District 7
M/M Melvin Camet, Jr.	18 Catalpa	District 6

The Gardens of the Month are featured with photos under the "Members Only" section of the website.

# WES ULMO INTERIOR DESIGN INC.

602 N. Cortez Street  
New Orleans, LA 70119

Phone: 504-304-0088

Fax: 504-304-1089

Email: [Wesulmointeriordesign@cox.net](mailto:Wesulmointeriordesign@cox.net)

**BACK TO SCHOOL RULES**  
**FROM: BIG JOHN**

**BUCKLE UP,  
SLOW DOWN,  
& DON'T TEXT AND DRIVE!**



**COMBEL'S**  
*Customs*

4512 4th St. • Marrero, LA 70072

p: 504.361.1856 or 504.348.2680 • f: 504.347.9481

**YOUR WESTBANK COLLISION CENTER**



**Friendly  
Accessible  
Professional  
Puts You First  
Knowledgeable  
35 Years Experience**

**Call Sandy  
392-2129 - 669-7237**

I know your neighborhood & the market, and have the expertise to sell your property, too. If you are interested in buying or selling, please call me now.



[www.SandyDomico.com](http://www.SandyDomico.com)

**Sandy Sells Plantation Estates**

If your property is currently listed with another broker, please disregard this offer.

# FERDIE'S Printing Service

*For all your printing & promotional needs!*

BLACK & WHITE COPIES  
BOOKLETS  
BROCHURES  
BUSINESS CARDS  
CARBONLESS FORMS  
COLOR COPIES  
COVERS

COOKBOOKS  
CUPS  
DIE CUTTING  
EMBOSSING  
ENVELOPES  
GRAPHIC DESIGN

LETTERHEAD  
LETTERPRESS  
MANUALS  
NAPKINS  
NEWSLETTERS  
NOVELTIES

PENS  
POSTERS  
PRAYER CARDS  
PROGRAMS  
SCRATCH PADS  
STATIONARY  
& MUCH MORE!



**[www.ferdiesprinting.com](http://www.ferdiesprinting.com)**

OFFICE (504) 341-6395 - FAX (504) 340-9426 - 3751 SPENCER STREET - HARVEY, LOUISIANA 70058

# Update on Parc Des Familles

The current Advisory Board is working with the Audubon Institute to help in the development. Audubon recently made a presentation prepared on the 1<sup>st</sup> Phase of Parc Des Familles from Lake Flato's planning study. The 1<sup>st</sup> Phase will consist of Boardwalk, Studies on Land and the Parking Lot. The presentation focal point included a Natural Area, Visitors Center, catering facility, Boardwalk, live animals, bird shows, indoor theatres, exhibits, gift shop, educational area for kids, Café, balloon rides to explain wetlands, swamp tours, bayou boat rides, cypress nursery, restoration exhibit, water critter exhibit, bird watching, outdoor classrooms, nature trails and more. The Advisory Board is discussing the possibility of adding about 4 soccer fields in the near future. They are presently working on fill to start the soccer fields. Capital Outlay provided \$155,000 received for Meyer to design the boardwalk, parking lot and restrooms for the Environmental Study Area. They also met with the Louisiana Department of Tourism who toured the park to discuss future monies and grants that might be available.

**Acadian Carpet Center Inc.**



LOOK US UP ON THE WEB  
www.acadiancarpet.net

5140 LAPALCO BOULEVARD - MARRERO, LA 70072  
PHONE (504) 340-2432 FAX (504) 340-2468

**PATIO GARDENS & LANDSCAPING INC**

4802 WestBank Expy.  
Marrero, La. 70072



Wayne J. Nocito  
Graduate Horticulturist USL 75

Phone: 347-7694

website: patiogardens.net e-mail patiogardens@bellsouth.net

**STATE FARM INSURANCE COMPANIES**  
HOME OFFICES: BLOOMINGTON, ILLINOIS






**DAVID W. PERRET, SR., LUTC**  
Agent

**725 Westbank Expressway**  
Westwego, LA 70094

bus.: 504.347.6228 • fax: 504.341.9785

**Richard Bordenave** Realtor®  
Website: http://www.richardbordenave.com  
Email: richard@richardbordenave.com

3725 MacArthur Blvd. New Orleans, LA 70114  
Bus: (504) 366-4511 Fax: (504) 366-4519  
Cell: (504) 232-1297

An independently owned & operated member of The Prudential Real Estate Affiliates, Inc.



2330 Lapalco Blvd.  
Harvey, LA 70058  
(504) 362-0800

210 Old Hammond Hwy.  
Metairie, LA 70005  
(504) 828-2220

208 Lee Lane  
Covington, LA 70433  
(985) 875-0432

MARK AND LETTY BERGERON, Proprietors

# EXPERIENCE THE JOY OF NOT PAYING TAXES.

If you're in the 25% tax bracket, a tax-free Louisiana Public Facs. Auth. Hosp. Rev. bond yielding 4.97%\* pays as much after-tax income as a taxable bond yielding 6.77%.

**Municipal Bond**

**5.14%\***

Yield to Call

Callable on: 05/01/2020 @ 100.00

Final Maturity: 11/01/2030

\*Yield effective 08/10/2010, subject to availability. Yield and market value may fluctuate if sold prior to maturity, and the amount you receive from the sale of these securities may be more than, less than or equal to the amount originally invested. Bond investments are subject to interest rate risk such that when interest rates rise, the prices of bonds can decrease and the investor can lose principal value. Any bond called prior to maturity may result in reinvestment risk for the bond owner. May be subject to state and local tax. May be subject to alternative minimum tax (AMT). Municipal bonds may have original issue discount.

To invest in tax-free bonds, call or visit your local financial advisor today.



**James W Hines**  
Financial Advisor

2273 Baratavia Blvd Suite 3  
Marrero, LA 70072  
504-341-9854

www.edwardjones.com Member SIPC

**Edward Jones**  
MAKING SENSE OF INVESTING

## **REVISED PECA NEWSLETTER ADVERTISING GUIDELINES** (Effective August 29, 2010)

*The Plantation Estates Newsletter* is published quarterly and is distributed to all residences in Plantation Estates subdivision. Issues usually include updates from the president and reports on security, membership, restrictions, events and garden of the month awards.

### **How to Submit Advertisements**

Anyone who owns or manages a business and is interested placing an ad in *The Plantation Estates Newsletter*, may do so by contacting Wynona Witkovski by email at [wynona@tulane.edu](mailto:wynona@tulane.edu) or by telephone at 504.606.9759. Details concerning pricing and deadlines for submission of ad copies and payment of fees, as well as production schedules are provided below.

### **PLANTATION ESTATES NEWSLETTER AD SUBMISSIONS:**

**Issue Dates:** Published quarterly, usually in March, June, September and December.  
**Distribution Date:** Between the beginning and middle of the month.  
**Deadlines:** Print-ready graphics files (.jpgs preferred) are due **no later than** the 5<sup>th</sup> of the month prior to publication in order to meet the newsletter production schedule.

#### **2010 Fall/Winter Production Schedule**

Issue	Ad/Copy Deadline	To Printer	In Homes
Dec 2010	Nov 1	Nov 15	Wk of Dec 6

#### **2011 Production Schedule**

Issue	Ad/Copy Deadline	To Printer	In Homes
Mar 2011	Feb 1	Feb 14	Wk of Mar 7
Jun 2011	May 2	May 16	Wk of Jun 6
Sep 2011	Aug 1	Aug 15	Wk of Sep 5
Dec 2011	Nov 1	Nov 14	Wk of Dec 5

**Billing:** *Payment is required upon submission of ads.* Please make checks payable to Plantation Estates Community Association and mail to **PECA, P.O. Box 683, Marrero, LA 70073.**

### **NEW AD RATES FOR REMAINDER OF 2010 THROUGH 2011**

Ad Space	Dimensions	Ad Rates B&W	Ad Rates Color
Full Page	8.5 x 11 inches*	\$200	<b>\$325**</b>
1/2 Page	5.5 x 8.5 inches*	\$100	<b>\$200**</b>
1/4 Page	4.25 x 5.5 inches*	\$50	<b>\$125**</b>
Business Card Ad (For 4 issues)	3.5 x 5 inches*	\$120/year	

\* With .25 inch dead space.

\*\* New fixed rate.

Note: All ads must be designed and formatted to the correct ad size. Also, please label the file with the name of the business.

**Look Better. See Better.**

# **St. Charles VISION OUTLET**

*Making quality affordable.*

- **Comprehensive eye health exams**
- **Diagnosis and management of ocular disease**
- **Specializing in difficult contact Lens fits**
- **Name brand eyewear**
- **Insurance accepted, including major medical plans**
- **Emergency, walk-in, and evening appointments available**

**3909 Lapalco Blvd.  
Suite 201  
504-328-9733**

Located at the corner of Paxton & Lapalco  
inside the Family Doctors building  
on the 2<sup>nd</sup> floor.

***We're part of your neighborhood.***

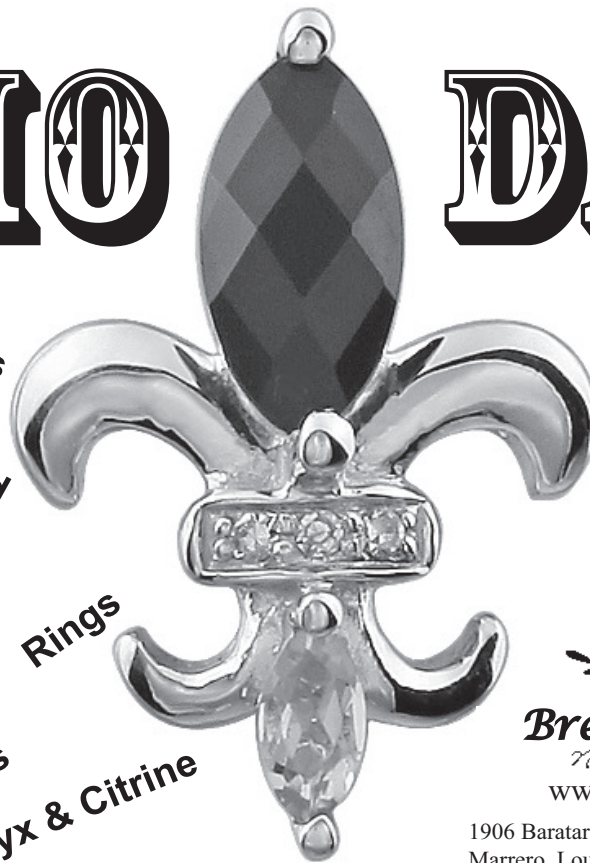
## **Update on the Wayne's World Development at Belle Promenade**

By: Charles Miller, III

I've heard rumors the Wayne's World project is on hold. Allen Powell with the *Times Picayune* tried to call several numbers he had received information to write the first story on, but all numbers are disconnected now. I also tried to contact the man Earl on their official website, but received no response in the past few weeks. At this point, I too assume the project is on hold. The NFL website doesn't show Reggie Wayne being hurt or being cut from the team, so I'm not sure exactly what is going on. If we get any more information, I will keep you posted.

# **“WHO DAT”**

Bracelets Money Clips  
Yellow Gold White Gold  
Key Chains Earrings  
Necklaces Cuff Links  
Rings Silver  
Anklets Diamonds  
Onyx & Citrine



*Something for  
the whole  
family --  
from your  
Neighborhood  
Jeweler*



**Breaux's Jewelers**

*Nobody does "U do" like we do!*

[www.breauxsjewelers.com](http://www.breauxsjewelers.com)

1906 Baratavia Boulevard  
Marrero, Louisiana 70072

Phone (504) 347-7332  
Fax (504) 347-9943

# Sit down. Go online. Prevent a heart attack.



## **Assess your risk for heart disease in 7 minutes.**

There are 70 million Americans with heart disease. For many, the first symptom will be heart attack or death. Don't let this be you.

Find out your risk today. Just take West Jefferson Medical Center's HeartAware Online Risk Assessment. It's a free 7 minute test you'll find right on our website that can help determine your risk of developing heart disease. You'll get a personal risk report and some tips on what you can do to help get or stay heart healthy.

### **It's quick, free and confidential.**

Visit [www.wjmc.org](http://www.wjmc.org) to take the HeartAware Online Risk Assessment. It just might save your life.



**Find out if you're at risk.  
Take the FREE 7 minute  
HeartAware test today at**

**[www.WJMC.org](http://www.WJMC.org)**



For additional information, call (504) 349-2051



1227 First Avenue  
Harvey, LA 70058  
(504) - 340 - 2471

Doors ~ Window ~ Cabinets ~ Columns ~ Mouldings ~ Hardware ~ Shutters ~ Stairs

*We're more than just doors!*

*Bring your dream  
kitchen and bath  
to life!*



**Special Sale Prices -  
Going on Now!!**

*Call today for details and  
an appointment!*

Authorized Dealer:

**HOMECREST**  
CABINETS & BATHS

*Dynasty*  
by Omega™

**Omega**  
Cabinetry

Fast, Friendly Service and Discount Prices...

For Your Active,  
Healthy Lifestyle!



majoria drugs®

Your Partner in Healthy Living



2564 Barataria Blvd. • Marrero  
(504) 340-3592

Bring this coupon to either store and receive

**\$5.00 OFF**

any over-the-counter purchase

of **\$25.00** or more

\*some restrictions apply • offer expires 9-30-10

[www.majoria.com](http://www.majoria.com)



888 Terry Pkwy. • Terrytown  
(504) 392-1551



New JPSO 3<sup>rd</sup> District Station COMING SOON in the Parc Des Familles area. Located off Lafitte LaRose Hwy.

# Jefferson Parish Council Contacts

**Parish President:**

**Aaron Broussard**

West Bank office: 364-2700

Email: [abroussard@jeffparish.net](mailto:abroussard@jeffparish.net)

**John Young, Councilman At-Large Division A**

West Bank office: 364-2616 Fax: 364-3499

Email: [jyoung@jeffparish.net](mailto:jyoung@jeffparish.net)

Assistant (West Bank): Royce Blanchard

Email: [RBlanchard@jeffparish.net](mailto:RBlanchard@jeffparish.net)

**Parish Council Chairman:**

**Councilman At-Large Division B:**

**Tom Capella**

West Bank office: 364-2624 Fax: 364-2828

Email: [tcapella@jeffparish.net](mailto:tcapella@jeffparish.net)

Assistant (West Bank): Brian Grenrod

Email: [BGrenrod@jeffparish.net](mailto:BGrenrod@jeffparish.net)

**3<sup>rd</sup> District Councilman:**

**Byron Lee**

West Bank office: 364-2603

Email: [blee@jeffparish.net](mailto:blee@jeffparish.net)

Assistant (West Bank): Casey Jumpiere

Email: [CJumpiere@jeffparish.net](mailto:CJumpiere@jeffparish.net)

**West Bank Council Address:**

Mailing address:

4<sup>th</sup> Floor

New Gretna Courthouse

P.O. Box 9

Gretna, LA 70054-0009

## HELPFUL NUMBERS

Citizens Affairs .....	736-6100
General code violations .....	364-3500
Environmental affairs .....	736-6102
Weed control .....	364-3540
Jefferson Transit .....	364-3450
Abandoned vehicles .....	364-3543
Stray animals .....	349-5111
Garbage pickup .....	736-6102
Recycling .....	736-6104
Mosquito control .....	366-0084
Water .....	349-5088
Streets .....	349-5800
Drainage .....	437-4939

*The PECA newsletter is published quarterly by the Association Board in an effort to keep all residents apprised of items of interest to our community. It is delivered to all residents of the subdivision without charge. We welcome your comments, suggestions and ideas.*

# Plantation Estates Community Association Inc.

**OFFICERS**

**CHARLES MILLER**, President

371-8201; e-mail: [president@plantationestates.org](mailto:president@plantationestates.org)

**BETH MARTIN**, General Vice President

347-0424

**CANDY JENSEN**, Vice President, Restrictions

328-8351

**JOHN FORTUNATO**, Vice President, Security

616-8731; e-mail: [security@plantationestates.org](mailto:security@plantationestates.org)

**WESLEY BOUDREAUX**, Treasurer

340-4789

**MICHELE CAVALIER**, Secretary

421-0641

**COMMITTEE CHAIRPERSONS**

**COMMUNICATION**

Charles Miller 371-8201

e-mail: [news@plantationestates.org](mailto:news@plantationestates.org)

**FLAG COMMITTEE**

Norman Gauthreaux 341-2599

**GARDEN OF THE MONTH**

Vacant

**HOSPITALITY**

Beth Owens 348-7066

**MEMBERSHIP**

Winnie Witkovski 340-8368

**NEWSLETTER**

Winnie Witkovski [wynona@tulane.edu](mailto:wynona@tulane.edu)

**PLANTATION ESTATES ARCHITECTURAL  
BOARD OF REVIEW**

Jack Owens, Chairman

348-7066

**DISTRICT REPRESENTATIVES**

**DISTRICT 1**

**BILL STAEHLE**

340-5867

**DISTRICT 2**

**DEBI LaJAUNIE**

341-8441

**DISTRICT 3**

**RICHARD BORDENAVE**

340-1419

**DISTRICT 4**

**JACK OWENS**

348-7066

**DISTRICT 5**

**MERLIN JACKSON**

347-4934

**DISTRICT 6**

**DREW LUKINOVICH**

348-0583

**DISTRICT 7**

**BILL LANGER**

348-3570

**AT LARGE #1**

**CHARLES GIARDINA**

347-3581

**AT LARGE #3**

**JUDY GLANCEY**

347-9207

**AT LARGE #2**

**JOHN COMBEL**

328-3911

**AT LARGE #4**

**STEPHANIE TOMLINSON RICAU**

388-1095