



Garden of the Month

By Barbara Volz

October 2006

M/M William Langer	40 Nottoway	District 7
M/M John Fortunato	20 Gainswood E	District 7
M/M Emmett Kron	12 Oakley	District 6
M/M Thomas Anzelmo, Jr.	36 Shadows	District 6

November 2006

M/M Russel Todaro, Sr.	18 Darby	District 5
M/M Gerard Sax	32 Madewood	District 6
M/M Danny Joyce	51 Seven Oaks	District 5
M/M John Zemanek	26 Seven Oaks	District 5

December 2006

M/M Cline Matherne	50 Oak Alley	District 4
M/M Henry Nguyen	45 Seven Oaks	District 5
M/M Herbert Lewis	32 Gainswood E	District 7
M/M Timothy Berryhill	45 Gainswood E	District 7

January 2007

M/M Phan Vuong	28 Nottoway	District 7
M/M Henry Nguyen	62 Oak Alley	District 4
M/M Herbert Lewis	41 Seven Oaks	District 5
M/M Timothy Berryhill	18 Tara Court	District 6

February 2007

M/M William Enos	25 Asphodel	District 3
M/M Joseph Adams, Sr.	113 Belle Grove	District 3
M/M Irvin Grinder	31 Melrose	District 6
M/M David Graser	29 Shadows	District 6

The Gardens of the Month are featured with photos on the website.

Post your pets on the Plantation Estates website located at www.plantationestates.org at no charge to all active Association members. This service is offered in an effort to help locate the owner of a lost pet(s) immediately and contact you as soon as possible. Email a picture of your pet(s) and contact information to be posted online to Mike Dauenhauer at mdauenha@uno.edu.

CHILD CARE SERVICES AVAILABLE

The following residents of Plantation Estates are available to provide baby sitting services:

Cassie Graziano - 341-3284
Tiffany Mosel - 340-9281
Danielle Boudreaux - 340-4789
Allyson Graziano - 341-3284

If you are under 21 and would like your name listed for this or any other service within Plantation Estates please contact Pat Ketcham at 340-8100.

The PECA newsletter is published quarterly by the Association Board in an effort to keep all residents apprised of items of interest to our community. It is delivered to all residents of the subdivision without charge. We welcome your comments, suggestions and ideas.

Plantation Estates Community Association Inc.

OFFICERS

CHARLES MILLER, President
371-8201; e-mail: president@plantationestates.org
BETH MARTIN, General Vice President
347-0424
CANDY JENSEN, Vice President, Restrictions
328-8351
JOHN FORTUNATO, Vice President, Security
616-8731; e-mail: security@plantationestates.org
WESLEY BOUDREAUX, Treasurer
340-4789
JUDY GLANCEY, Secretary
347-9207

COMMITTEE CHAIRPERSONS

COMMUNICATION
Mike Dauenhauer 348-4421
e-mail: news@plantationestates.org
FLAG COMMITTEE
Norman Gauthreaux 341-2599
GARDEN OF THE MONTH
Barbara Volz
HOSPITALITY
Beth Owens 348-7066
MEMBERSHIP
Laticia Jackson 347-4934
NEWSLETTER
Pat Ketcham 340-8100

PLANTATION ESTATES ARCHITECTURAL BOARD OF REVIEW

Jack Owens, Chairman
348-7066

DISTRICT REPRESENTATIVES

DISTRICT 1 BILL STAEHLE 340-5867	DISTRICT 4 JACK OWENS 348-7066
DISTRICT 2 DEBI LaJAUNIE 341-8441	DISTRICT 5 MERLIN JACKSON 347-4934
DISTRICT 3 RICHARD BORDENAVE 340-1419	DISTRICT 6 DREW LUKINOVICH 348-0583
DISTRICT 7 BILL LANGER 348-3570	
AT LARGE #1 WAYNE NOCITO 347-3581	AT LARGE #2 CHARLES GIARDINA 347-9897
AT LARGE #3 JOHN COMBEL 328-3911	

PLANTATION ESTATES NEWSLETTER



February, 2007 • Volume No. 43

Plantation Estates Community Association • P. O. Box 683 • Marrero, LA 70073

Web Site: www.plantationestates.org

President's Report

Greetings to all Plantation Estates Homeowners:

Well, another year has passed; and, thankfully we made it with no real threat of any hurricane similar to Katrina. This valuable time has been much needed to get things back to normal; and, obviously we still have a lot of work to do. Approximately 17 months after Katrina, The Louisiana Road to Home program has completed 391 out of 103,710 applications. Some of our Jefferson Parish public schools have not been able to address their Katrina damage. New Orleans public schools still lack space for children; and, proposals are being made to offer vouchers which use more tax payer dollars instead of addressing the real issues. The only option for homeowners insurance in this area is the Louisiana Citizens FAIR plan, which is expensive and one of the main reasons for the slow real estate market. Many of the pre-Katrina critical care hospitals have not yet reopened resulting in usual wait times in the emergency room of existing hospitals. Flood projects, like the construction of levees along the Harvey Canal, have been talked about for decades without any completed levee protection along the East side of the Harvey Canal. Although the Plantation Estates subdivision has experienced very few issues, crime is still a major concern to everyone, and drugs are usually involved in some way with many of these cases. As predicted, some of these issues will take some time to resolve. If you ever considered getting more involved, there's no better time than now.

There is some promising signs post-Katrina. Crimestoppers has played a tremendous role in our community to pass on important tips for law enforcement to catch criminals. Governor Blanco has just signed an executive order to commandeer the first of five pieces of land needed for the long-awaited Harvey Canal floodwall. All West Bank safe houses are completed and fully operational. The State has just given our local hospitals the first share of financial assistance for treating uninsured patients. The widening of Barataria is almost complete to help with some traffic congestion. The City of New Orleans is soon to approve a plan that will serve as a blueprint for rebuilding. And, the Saints have given us all some encouragement and a much needed break from everything by making it to their first NFC Championship Game. The loss was painful, but still an accomplishment.

Included in this newsletter is a tentative schedule of events the association plans to have for the year. Your support is vital to keep the association alive. If you have some time to volunteer for anything, please let us know. All Plantation Estates homeowners should have received an invoice for the 2007 year to cover the yearly association dues. If you are new to the neighborhood, we have included a membership form you can fill out and return to us.

Everyone in Plantation Estates contributes to our security budget through the taxing district added to your property tax bill. This allows for us to continue the off-duty Jefferson Parish police patrols in our neighborhood including other crime prevention techniques. We are still evaluating and reviewing proposals to add cameras in the neighborhood.

Unlike our security budget, joining our civic association is totally voluntary. The Plantation Estates Board and Committee members are made up of volunteers who work hard on your behalf. These individuals all have families and limited schedules as well. We still continue to receive questions and concerns from some homeowners who choose not to be a member of the association, which is only \$60/year. You do have a choice and we appreciate your support. If you choose not to be a member, I encourage you to contact your elected officials to address your issue.

Continue to check for updates on our website at: <http://www.plantationestates.org>

Respectfully,

Charles Miller, III
Plantation Estates Community Association, President
cmiller@ocsbbs.com

Neighborhood News



❖ Best Decorated for Halloween 2006

By Barbara Volz

M/M Robert Jensen	21 Gainswood Dr. E	District 7
M/M John Combel	10 Oakley Drive	District 6
M/M Mark Zimmer	4932 Oak Alley Blvd.	District 2
M/M Terry Talamo	39 Oak Alley Blvd.	District 4
M/M Ritchie Lajaunie	14 Catalpa Court	District 2
M/M. Joseph Scorscone	38 Burleigh Ct. N.	District 2
M/M John Zemanek	26 Seven Oaks	District 5
M/M Wayne Nocito	35 Nottoway Drive	District 7

❖ Best Decorated for Christmas 2006

By Barbara Volz

M/M Elmo Pecot, Jr.	38 Oak Alley Blvd.	District 4
M/M Victor Brossette	25 Seven Oaks	District 5
M/M Brian Callegan	46 Burleigh Ct. N	District 2
M/M Russel Todaro, Sr.	18 Darby Ct.	District 5
M/M John Zemanek	26 Seven Oaks	District 5
M/M Lonnie Rodrigue	55 Oak Alley	District 4
M/M Harry Zimmerman	47 Seven Oaks	District 5
M/M John Combel	10 Oakley	District 6

❖ Santa Clause Visits Plantation Estates

By Beth Martin

It was a perfect evening on Sunday, December 10, at the home of John and Brenda Combel, #10 Oakley Drive. Santa arrived at 5:30pm and began greeting visitors young and old. I would like to thank Mr. and Mrs. Combel for the use of their lovely decorated front yard and refreshments, Candy Jensen and Beth Owens for all their help before, during and after the event.

❖ Easter Egg Hunt

By Beth Martin

The Annual PECA Easter Egg Hunt will be held at the end of March or beginning of April, watch for flyers for the exact date and location. We will once again have loads of Easter Eggs for finding, the "Special Eggs" with special prizes and a visit from the Easter Bunny. Hope to see you there.

❖ Plantation Estates Email Distribution List

If your current email address is not on our list, please send it to president@plantationestates.org and we will update our list. We email neighborhood and related news articles; and, we can use your email as a source of communications with local news from our area if we have to evacuate again.

❖ Whitney Bank coming soon at Parlange & Lapalco

As you may have heard, Whitney Bank will be coming this year in 2007 at the corner of Parlange Drive and Lapalco Blvd. The drainage and sewage improvements have already begun. The contractor is working hard to minimize the impact of our garden at Parlange,

but the connection is underneath it. There will be entrances to the bank from both Lapalco Blvd. and Parlange Drive. As businesses develop outside our neighborhood on Lapalco, Marrero Land does plan to make a connection service driveway to access all of the businesses. Updates will be provided as we get it.

❖ Traffic light at Parlange/Lapalco

For safety concerns, the Plantation Estates Community Association met with Parish Officials and other interested parties to recommend some changes at Parlange/Lapalco Blvd. and to discuss the U-turn problems on Lapalco between Krispy Kreme/Raising Cane's. The meeting was held on November 21, 2006.

The following improvements are being made

1. We recommended changing the light sequence at Parlange/Lapalco so the Parlange traffic goes first. This was done so Oschner visitors and PE homeowners can safely get across to the other side of Lapalco while traffic is stopped. The Home Depot traffic light will now change after us.

2. The other recommendation was to add a traffic light at the U-turn on Lapalco that will move at the same time as Lapalco traffic turns into Wal-mart, which will not impact any further delay in the existing traffic since traffic is already stopped for Wal-mart. Councilman Lee has given his commitment to add a turning light at the U-turn lane in front of Cane's because of the safety concerns at that location. I've included a list of meeting attendees below, which all agreed on the signal light being added to the location. This was viewed as a benefit to everyone along Lapalco near the intersection including PE homeowners, Marrero Land and Raising Cane's. Of course, all other traffic flow will benefit so you can now safely drive uphill in the U-turn and cross the 3-lanes of Baratara traffic with a traffic light. Because of the size and cost of the job, this will have to go out for bids and may take about 6 months to get done. We will keep you informed on the progress.

List of meeting attendees:

Jody Savoie, Jefferson Parish
 Councilman Byron Lee, District 3
 Terry Talamo representing Chairman John Young
 Col. John Fortunato, Sheriff's Office
 Vincent A. Vastola, Director of Real Estate for Marrero Land
 Brad Sanders, Construction Dept. for Raising Cane's, Baton Rouge, LA
 Charles Miller, III, Plantation Estates, President
 Beth Martin, Plantation Estates, Vice-President
 John Combel, Plantation Estates, Board Member
 Ashvini Pandit, Plantation Estates & field of expertise (retired with the Parish as Dept. Director of Streets Dept.)

2330 Lapalco Blvd.
Harvey, LA 70058
(504) 362-0800

210 Old Hammond Hwy.
Metairie, LA 70005
(504) 828-2220

208 Lee Lane
Covington, LA 70433
(985) 875-0432

MARK AND LETTY BERGERON, Proprietors

Charles J. Giardina
RFC, LUTCF
Financial Services Executive
CA Insurance Lic. # 0C43733
Registered Representative

3838 North Causeway Boulevard
Suite 3400
Metairie, LA 70002
Tel (504) 613-2228
Cell (504) 236-7999
Fax (504) 613-2287
cgiardina@metlife.com

Life insurance and annuities offered by Metropolitan Life Insurance Company, New York, NY 10166.
Auto and Home insurance offered by Metropolitan Property and Casualty Ins. Co. and affiliates, Warwick, RI.
Mutual funds offered by MetLife Securities, Inc., New York, NY 10166.

FERDIE'S
Printing Service

Quality Offset Printing

PHIL BLANCHARD

3751 Spencer Street • Harvey, Louisiana 70058
(504) 341-6388 • (504) 341-6395 • Fax: (504) 340-9426
email: bernadette@ferdieprint.com

STATE FARM
INSURANCE COMPANIES
HOME OFFICES: BLOOMINGTON, ILLINOIS

DAVID W. PERRET, SR., LUTC
Agent
725 Westbank Expressway
Westwego, LA 70094

bus.: 504.347.6228 • fax: 504.341.9785

Off. (504) 341-5857
Fax (504) 341-7406

AA
VACUUM TRUCK SERVICE, INC.

KEVIN A.. BREAUX
Vice President

5224 Oak Drive
Marrero, LA 70072

DAVID RIVAS REALTY
30 Years of Experience
4% Commission to Seller
Why Pay More?
504-341-4263
75% - 25% Agent-Broker Split

Jay Susslin
REALTOR®

Direct: (504) 723-5403
Office: (504) 207-2007
Fax: (504) 648-2733
Email: Jay@JaySusslin.com

320-C Lapalco Blvd.
Gretna, LA 70056

Each office is independently owned and operated.

Acadian
Carpet
Center
Inc.

LOOK US UP ON THE WEB
www.acadiancarpet.net

5140 LAPALCO BOULEVARD - MARRERO, LA 70072
PHONE (504) 340-2432 FAX (504) 340-2468

4802 Westbank Expwy.
Marrero, LA 70072

PATIO GARDENS
&
LANDSCAPING, INC.

WAYNE NOCITO
Graduate Horticulturist

347-7694

Bayou Massage
Stress Relief

R. Thibodeaux L.M.T
504-432-4317

House Calls or Clinic
Personal Trainer

LA Lic.# 0166
Discount on 1st Massage
Gift Certificates Available

Arden Cahill Academy
Infant Centre (2 Months)-Pre-School-Grade 8

Academic Excellence
Cultural Enrichment
3101 Wall Blvd., Gretna

APPLICATIONS
NOW BEING ACCEPTED

392-0902

E-Mail: www.ardencahillacademy.com
Child Care State Approved
Summer Camp Non-Discriminatory

MARY KAY®

MARY B. Staehle
Independent Beauty Consultant

76 Anchorage Drive
Marrero, LA 70072
504-340-5867

mstaehle@marykay.com

PH (504) 348-2344
FAX (504) 348-9402

Fine
Jewelry

JEWELRY KINGDOM

Expert Jewelry & Watch Repairs • Custom Jewelry

1700 PROMENADE BLVD
SUITE 1301
MARRERO, LA 70072

HARRY
PATRICIA

Richard Bordenave Realtor®
Website: <http://www.richardbordenave.com>
Email: richard@richardbordenave.com

Prudential

GARDNER, REALTORS®

3725 MacArthur Blvd. New Orleans, LA 70114
Bus: (504) 366-4511 Fax: (504) 366-4519
Cell: (504) 232-1297

An independently owned & operated member of The Prudential Real Estate Affiliates, Inc.

This
Space Available

Please Support Our Advertisers

Jefferson Parish Council Contacts

Parish President:
Aaron Broussard
West Bank office: 364-2700
Email: abroussard@jeffparish.net

John Young, Councilman At-Large Division A
West Bank office: 364-2616 Fax: 364-3499
Email: jyoung@jeffparish.net
Assistant (West Bank): Terry Talamo
Email: TTalamo@jeffparish.net

Parish Council Chairman:
Councilman At-Large Division B:
Tom Capella
West Bank office: 364-2624 Fax: 364-2828
Email: tcapella@jeffparish.net
Assistant (West Bank): John Fitzpatrick
Email: JFitzpatrick@jeffparish.net

3rd District Councilman:
Byron Lee
West Bank office: 364-2603
Email: blee@jeffparish.net
Assistant (West Bank): Pamela Jackson
Email: PWJackson@jeffparish.net

West Bank Council Address:
Mailing address:
4th Floor
New Gretna Courthouse
P.O. Box 9
Gretna, LA 70054-0009

HELPFUL NUMBERS

Citizens Affairs	736-6100
General code violations	364-3500
Environmental affairs	736-6102
Weed control	364-3540
Jefferson Transit	364-3450
Abandoned vehicles	364-3543
Stray animals	349-5111
Garbage pickup	736-6102
Recycling	736-6104
Mosquito control	366-0084
Water	349-5088
Streets	349-5800
Drainage	437-4939

PARKING AND VEHICULAR CODE VIOLATIONS:

LOUISIANA STATUTES

- RS 32:144 Improper parking (vehicles parked against the flow of traffic)
RS 32:143 Posted parking (no parking)

JEFFERSON PARISH ORDINANCES

- 36:4 No parking on a sidewalk
36:5 No parking on servitude
36:88 No parking of a vehicle on a street for more than 48 hours
36:92 No parking on a neutral ground
36:93 No parking within 30 feet of an intersection
36:94 Blocking a driveway (parked directly across from or 3 feet of either side)
36:95 No parking within 20 feet of a fire hydrant
36:129 Abandon, junk or wrecked vehicles

ATTENTION: PE Homeowners who park their car at the intersection of Parlange and Lapalco

JP Code:

- (a) It shall be unlawful for any person to park any motor vehicle upon any public right-of-way, street or roadway which vehicle displays a "FOR SALE" SIGN thereon.
(b) It shall be unlawful for any person to park any motor vehicle upon any privately owned parking lot which vehicle displays a "FOR SALE" SIGN thereon, without the written consent of the owner of the parking lot, evidence of the consent being displayed so as to be visible through the windshield or window of the vehicle.
(Code 1961, § 11-71.8)



To Report Traffic
Related Complaints
Call the JPSO Traffic Division
465-1480

More **Neighborhood News**

❖ **Jefferson Parish Update from the
Department of Drainage as of Feb 2, 2007**
By: Kazem Alikbani, Director, Department of Drainage

West Bank Safe Rooms

Construction on all of the West Bank Safe Rooms, Bayou Segnette, Whitney-Barataria, Cousins, and Ames, is complete. All West Bank facilities are fully operational and have officially been accepted by Jefferson Parish on December 13, 2006.

Status of Pump Stations

Every Thursday all pump equipment including associated components is exercised and reports are distributed to your office, EOC, SCADA, and Department of Drainage.

Standard Operating Procedures

The East and West Bank Pump Stations test run all equipment at the stations that are controlled from the PLC's operator control room, the station floor, and Safe Room in a rotational order. Equipment not on the PLC's will be manually tested as well on a weekly basis. A video is in production process for each pump station outlining the procedures required to operate the pumps.

Remote Control Operation

Shaw has completed items generated from walk through on January 18, 2007 with the exception of RPM issues at Suburban Pump Station on Engine #2. Replacement of discharge basin level sensors is being performed station by station, with Bayou Segnette Pump Station completed first.

Additional Safe Rooms and Automation for Drainage Pump Stations

As part of storm proofing of Jefferson Parish Pump Stations, the COE, in cooperation with the Parish have targeted the construction of additional Safe Rooms and automation of the pumps at various manned drainage Pump Stations on the East and West Bank of Jefferson Parish. Under storm proofing, Safe Rooms will be constructed at five (5) additional Pump Stations with capability of remotely controlling the pumps from these Safe Rooms.

To expedite implementing this project, the Parish, through its own funding, has selected engineers that previously designed and constructed Safe Rooms and remote operation of the pumps to prepare plans and specifications for the five (5) additional Safe Rooms and related automation to remotely control pumps from these Safe Rooms. Once the designs are complete, the Parish will turn the plans and specifications to the COE for construction. The Parish may select to build part of the above projects on its own money to the extent that finances allow to fast track construction.

MEMBERSHIP

By Latricia Jackson

ANNUAL MEMBERSHIP DRIVE NOW UNDERWAY!

It's that time of the year again! Our annual membership drive is already underway. The 2007 dues invoices were mailed on February 1st and everyone should have received theirs by now. If you did not receive an invoice, please let us know. We extend special thanks to our members renewing their membership and a warm welcome to all prospective new members. We truly appreciate your support! Membership dues are \$60.00 per year per household due upon receipt of the invoice. Please remit your check for \$60.00 to:

Plantation Estates Community Association
P.O. Box 683
Marrero, LA 70072

Congratulations to our current members. 2006 was another banner year, with membership at 70%! Let's not stop there, renew today and encourage your neighbors to join. As always, the Plantation Estates Community Association (PECA) Boards goal continues to be 100% participation. If you have any questions concerning your membership or would like membership information call Latricia Jackson at (347-4934) or your district representative (listed in this newsletter).

Restrictions Committee Report

By Candy Jensen

I wish all our homeowners and families a Prosperous, Healthy and Happy New Year.

We have said it before; and, we are saying it again: we are hoping that all homeowners will make a New Year's Resolution to comply with the Protective Covenants and Restrictions of Plantation Estates Community Association. These are in place for your comfort, your safety and to enhance our neighborhood to be the only place you would want to live on the Westbank.

Please review these on our website: www.plantationestates.org

For those of you that travel in and out of our neighborhood via Parlange Drive, PLEASE stop at the STOP sign and also be aware of your turning onto Gainswood Drive. We have reports of many "near misses" involving our own residents. This is a repeat request too!

Please complete the following form and return it to your district representative or mail to:

PECA, P. O. Box 683, Marrero, LA 70073-5084

(Please include your check to cover the yearly dues of \$60/year)

PLANTATION ESTATES COMMUNITY ASSOCIATION HOMEOWNER INFORMATION*

NAME: _____

SPOUSE'S NAME: _____

ADDRESS: _____

CITY: _____ STATE: _____ ZIP: _____

HOME PHONE NO.: _____

BUSINESS PHONE NO.: _____

E-MAIL ADDRESS: _____

DISTRICT NO.: _____ LOT NO.: _____ SQUARE NO.: _____
(If you don't know the District, Lot and Square #, leave it blank)

***NOTE:** This information will remain confidential at all times and will not be sold or released to anyone outside of the Plantation Estates Community Association.

Security Report

By Colonel John N. Fortunato
Jefferson Parish Sheriff's Office

Hello from your Vice-President of Security.

Plantation Estates continues to be one of the safest neighborhoods in Jefferson Parish. We attribute this to the increased patrols currently taking place in our subdivision along with the additional calls for service we receive from our residents. This is truly an indication of our neighbors being concerned about the upswing in crime on the Westbank.

By now, I am sure you have often heard Sheriff Harry Lee speak of the increase in crime in two of our most troublesome neighborhoods which are here on the Westbank. Keep in mind, Plantation Estates lies between those neighborhoods identified as Lincolnshire and Woodmere. As Law Enforcement officials, we believe one of the most effective ways to combat crime is through strength in numbers. In keeping with these beliefs, Sheriff Lee has re-established our Street Crimes Unit, thus adding additional 20 or so officers who can be deployed into a specific target area at a moments notice. Sheriff Lee, in an unprecedented move, decided to pay members of our volunteer Reserve Division, allowing these officers to concentrate specifically in the Woodmere neighborhood.

Law Enforcement agencies throughout the country continue to endorse the many Crime Prevention programs that they have in place. The Neighborhood Watch program encourages neighborhoods like ours to join hands collaboratively and report suspicious activity by calling 911. Always remember you can prevent crime and assist the JPSO by reporting suspicious activity immediately. When you see something that "just doesn't seem right," call 911 and let us check it out. JPSO will dispatch the "beat car" along with our neighborhood patrol officers to the location. We would much rather check into a suspicious situation and find that everything is alright than miss the opportunity to catch a criminal because no one reported it. Please take a minute to also report the issue to our neighborhood association (PECA) by email or through the website. This is very important because this alerts our families, friends and neighbors of any potential dangers in PE.

CRIMESTOPPERS is an organization we have had remarkable success with. Callers receive cash rewards for information on individuals who are arrested and indicted as a result of a tip to them. ***The information you provide to CRIMESTOPPERS is strictly confidential, and you do not have to testify to receive the reward!***

In closing, remember the simple things. If you enter the neighborhood and are heading home, continue to look into your rear view mirror to see if anyone is following you. Lock your home and vehicle doors. Don't forget to close your garage door at night. Try to leave a light on if possible. And report anything suspicious.

Please give me a call at 616-8731 if you have questions, suggestions or comments.

Thank you

Statistics since our last newsletter

	Nov '06	Dec '06	Jan '07
Assault			
Auto Theft			1
Battery	1	1	
Burglar Alarms	12	9	9
Residence Burglary	1	1	
Vehicle Burglary		1	
Carjacking			
Criminal Damage			
Disturbing the Peace			
Drug Law Violation			
Homicide			
Kidnapping			
Peeping Tom			
Rape			
Robbery			
Suspicious Person		1	2
Theft		2	
Trespassing			
Vehicle Accidents	1		
Weapons			



Friendly
Accessible
Professional
Puts You First
Knowledgeable
32 Years Experience

Call Sandy
392-2129 - 669-7237

I know your neighborhood & the market, and have the expertise to sell your property, too.
 If you are interested in buying or selling, please call me now.

www.SandyDomico.com

Sandy Sells Plantation Estates

If your property is currently listed with another broker, please disregard this offer.

2004 PECA Schedule & Events

February:
 PECA Newsletter

March/April:
 Hang PE banners
 Easter Egg Hunt & Easter Bunny Visit (TBA)

May:
 PECA Newsletter

June:
 Hang United States Flag Banners

July:
 Remove all banners for hurricane season

August:
 PECA Newsletter
 National Night Out Against Crime (TBA)

October:
 Annual Homeowner's Association Meeting
 Pumpkin Painting Party (TBA)
 Halloween decoration contest – Best Decorated Houses
 Hang Fall season banners

November:
 PECA Newsletter

December:
 Hang Christmas banners
 Santa visits Plantation Estates
 Christmas decoration contest – Best Decorated Houses

- Current Plantation Estates Projects
1. Removal of dead trunks and trim trees on the main entrance of Oak Alley
 2. Replace a few missing street signs
 3. Reporting ongoing street lights problem
 4. Security Camera project



Happy Easter
Keep Christ
in your life
all year long

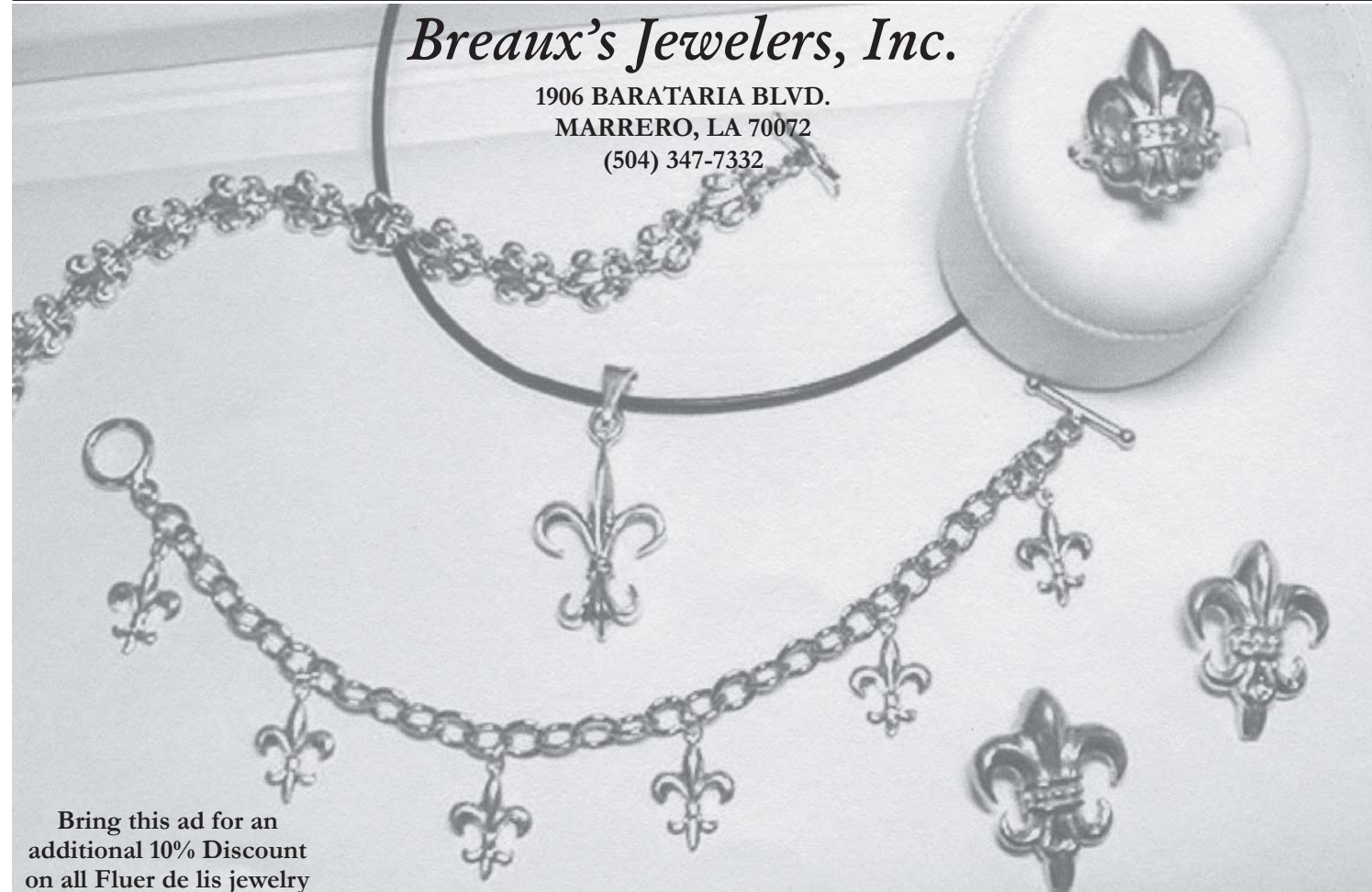


Remember
Don't Drink
& Drive
Buckle up

4512 4th St | Marrero | 504.361.1856

Breaux's Jewelers, Inc.

1906 BARATARIA BLVD.
 MARRERO, LA 70072
 (504) 347-7332



Bring this ad for an
 additional 10% Discount
 on all Fleur de lis jewelry